

LAST
REMAINING UNIT

POPLAR WAY SOLIHULL



NEW RETAIL UNIT AVAILABLE - SPRING 2018

UNIT A & B (18,439 SQ FT) PRE-LET TO POUNDLAND

UNIT C - 2,616 sq ft TO LET



Join these and many more retailers at Poplar Way, Mell Square

Poundland®

Clarks

M&S
EST. 1884

Sainsbury's

Argos

NEW LOOK

POPLAR WAY

UNIT C - 2,616 sq ft TO LET

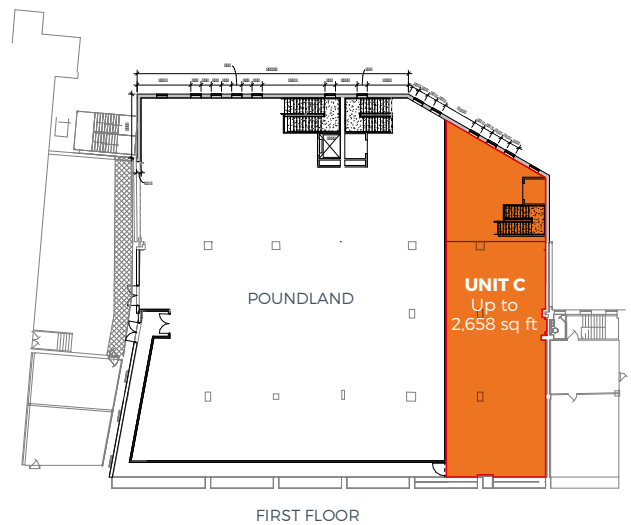
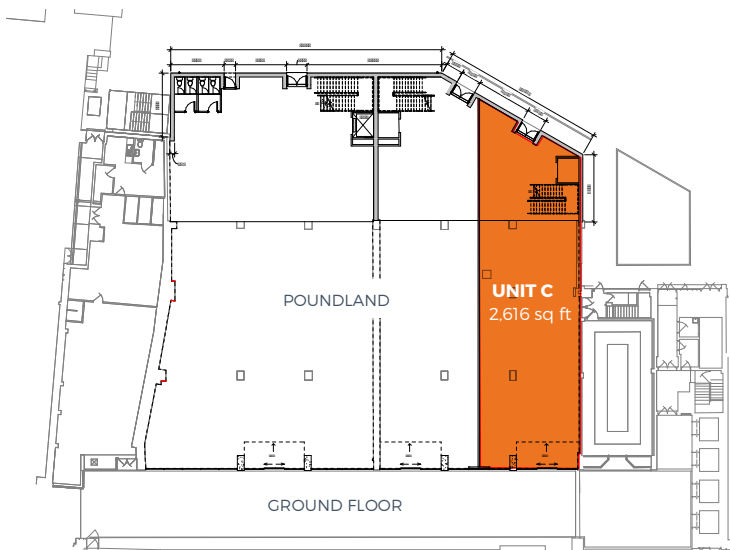
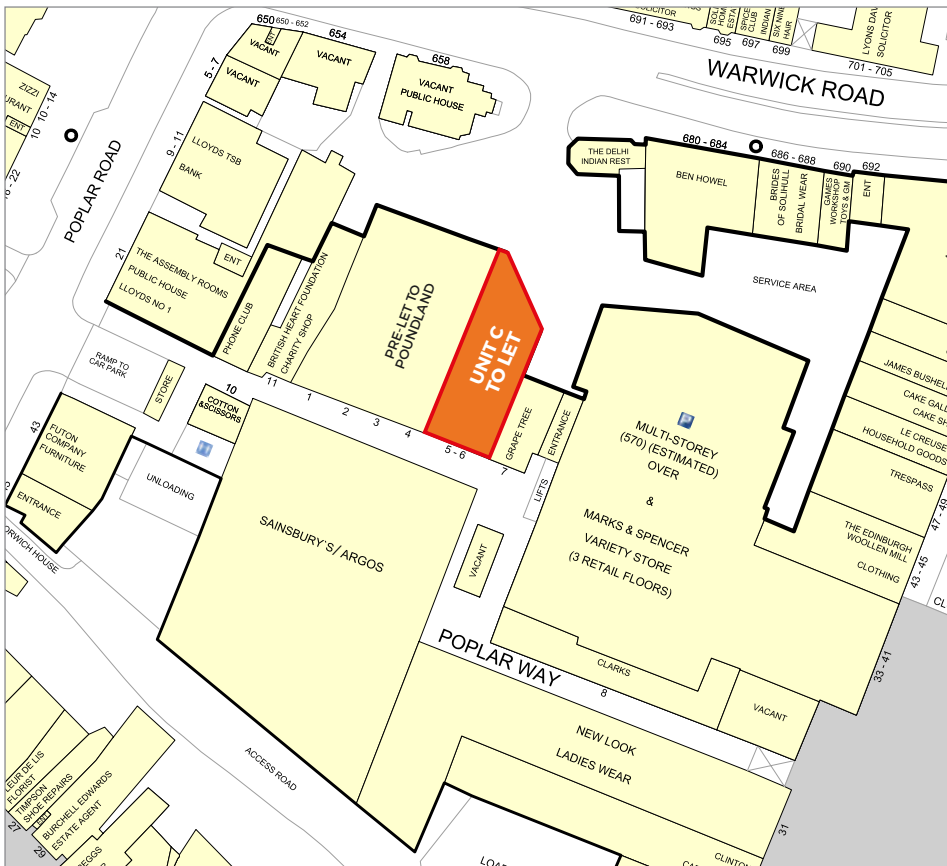
Poplar Way is a busy, covered shopping location that forms part of the Mell Square Shopping Centre and benefits from having direct access to a 569 space car park. Sainsbury's supermarket is located in Poplar Way as is the main entrance to Marks & Spencer Food. Argos have relocated and opened within Sainsbury's. Other occupiers include New Look, Clarks and Grape Tree.

LEASE

The unit will be offered by way of a new 10 year lease with a single upward only rent review at the end of the 5th year of the term.

RENT

Unit C: £95,000 per annum



UNIT C ACCOMMODATION

Internal Width	28.8 ft	8.77 m
Shop Depth	106.2 ft	32.37 m
Sales Area	2,616 sq ft	243 sq m
First Floor Storage	Up to 2,658 sq ft	Up to 247 sq m

For more information contact:

Robert Alston



ra@robalstonretail.com

Nick De-Pons



ndepons@bwdretail.co.uk

Misrepresentation Act - The Agents and Vendors take no responsibility for any error, mis-statement or omission in these details. Measurements are approximate and for guidance only. These particulars do not constitute an offer or contract and members of the agents firm have no authority to make any representation or warranty in relation to the property. 11235 0118 tasseldesign.co.uk

